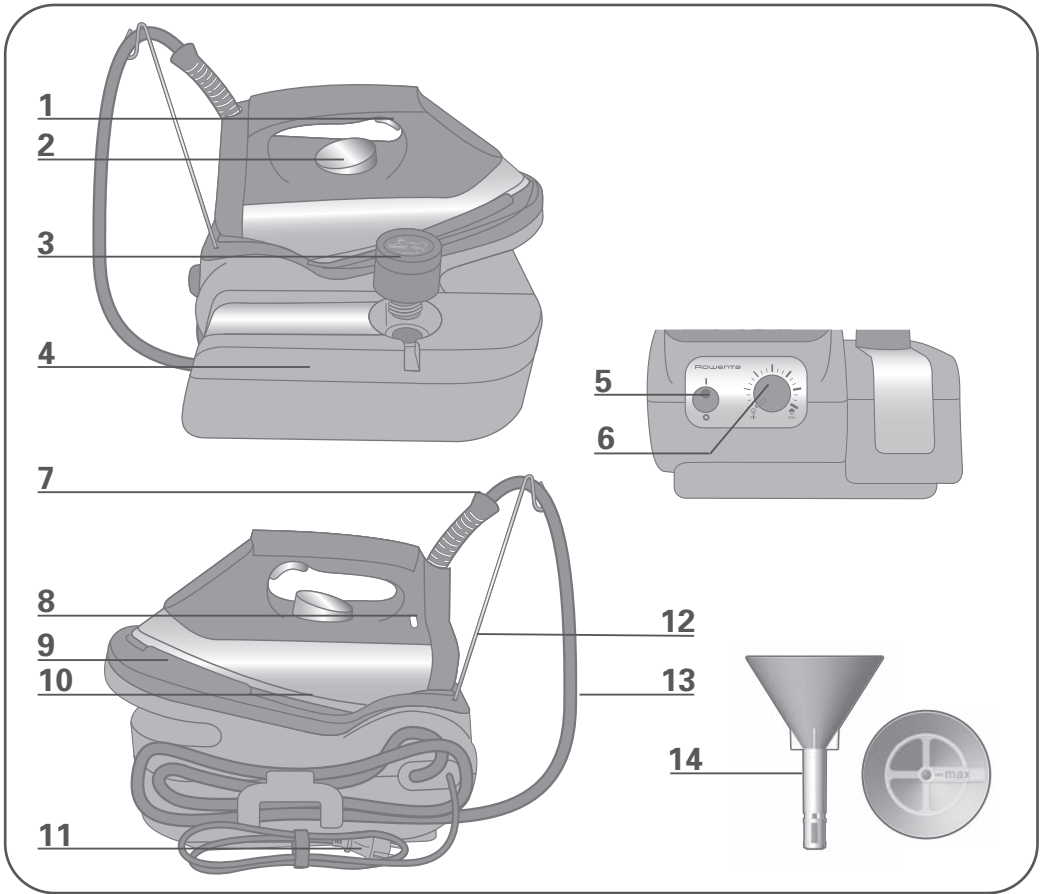


Rowenta®

PRESSURE IRON & STEAMER

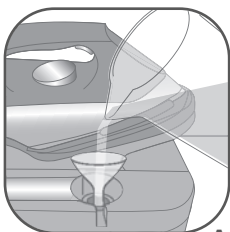


www.rowentausa.com

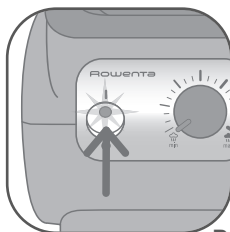


DESCRIPTION

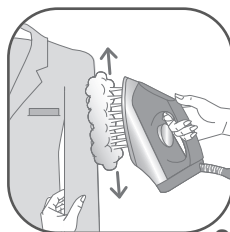
- | | |
|--|---|
| 1. Steam trigger | 7. Connection cord |
| 2. Temperature control dial | 8. Temperature indicator light |
| 3. Boiler cap | 9. Iron rest |
| 4. Boiler unit/water tank | 10. Stainless steel soleplate |
| 5. On/Off switch | 11. Power cord |
| 6. Steam output control dial
(depending on model) | 12. Steam hose guide (depending on model) |
| | 13. Steam hose |
| | 14. Water funnel |



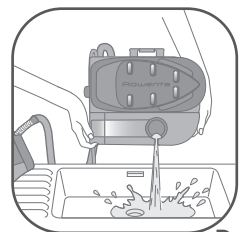
A Filling the boiler



B Turning the appliance on



C Vertical steam



D Rinsing out the boiler

IMPORTANT SAFETY INSTRUCTIONS

When using your appliance, basic safety precautions should always be followed, including the following :

Read all instructions before using the pressure iron & steamer.

- Use appliance only for its intended use.
- To protect against a risk of electric shock, do not immerse the appliance in water or other liquids.
- The appliance should always be turned off before plugging or unplugging from outlet. Never yank the cord to disconnect from outlet, instead grasp plug and pull to disconnect.
- Always disconnect appliance from electrical outlet when filling with water or emptying when not in use.
- Do not allow cord to touch hot surfaces. Let iron cool completely before putting away.
- Do not operate appliance with a damaged cord or if appliance has been dropped or damaged.
- To avoid the risk of electric shock, do not disassemble the appliance. Ship it to the nearest authorized Rowenta approved service center for examination and repair. Incorrect

reassembly can cause a risk of electric shock when the appliance is used.

- Not intended for use by children. Close supervision is necessary for any appliance being used near children. Unsupervised use can result in fire or personal injury. Do not leave appliance unattended while plugged in, on an ironing board, or while it is still hot.
- Burns can occur from touching hot metal parts, hot water or steam. Use caution when you turn a steam generator upside down. There may be hot water in the reservoir.
- Never attempt to unscrew the boiler cap while the appliance is in use. The strong steam pressure could result in burns. Only unscrew the cap when generator is cold or there is no more pressure in the boiler.
- Do not direct steam at people, animals or iron clothes while they are being worn.
- The use of accessory attachments is not recommended by Rowenta and may result in fire, electric shock or personal injury.
- Always put the iron with the soleplate down on the iron rest, never resting on its heel.

SPECIAL INSTRUCTIONS

- This is a 1750 watt appliance. To avoid a circuit overload, do not operate a high wattage appliance on the same circuit.
- This unit comes equipped with a 12 foot power cord and 6 foot steam hose.
- If an extension cord is absolutely necessary, a

- 15 ampere cord should be used. Cords rated for less amperage may overheat. Care should be taken to arrange the cord so that it cannot be pulled or tripped over unintentionally.
- Your Rowenta appliance is intended for household use only.

Save these instructions

BEFORE USE

Please read all of the instructions for use and the Important Safeguards carefully. Remove all packaging from the generator. It is normal for a small amount of smoke and a light odor to be produced the first time it is used. This will quickly disappear.

1 • Water recommendations

Tap water

Rowenta irons are designed to be used with REGULAR TAP WATER (up to 12 grains of hardness). If your water is harder than this, Rowenta recommends mixing half tap water with half distilled water which reduces the hardness; or just use inexpensive bottled spring water. Never use 100% distilled water as this can cause the iron to spit and leak.

Softened water

There are many types of household water softeners and the water from many of them is perfectly acceptable for use in the pressure iron & steamer. However, some types of softeners, particularly those that use chemicals such as salt, can cause the appliance to leak or spit during use. If you experience this type of problem, we recommend that you try using inexpensive bottled spring water or untreated tap water.

Once you have changed water it will take several uses to correct the problem. Rowenta recommends trying the steam function for the first time on an old towel or cloth that can be discarded to avoid damaging your clothes.

Iron and other impurities

If your water supply contains large amounts of iron or organic matter, these minerals can collect inside the appliance and eventually appear as brown stains. If you experience these problems Rowenta recommends using inexpensive bottled spring water.

Never use 100% pure distilled water.

Always remember :

Battery water and water containing additives (such as starch, perfume or fabric conditioner) may not be used. Such additives can affect the

properties of the steam and at high temperatures can form deposits in the steam chamber which will mark the laundry when they are emitted through the steam vents.

Descaling liquids/agents should not be used.

2 • Filling the boiler

The steam generator is designed to operate using tap water. (A).

While unplugged, place the pressure iron & steamer on a stable horizontal, heat resistant surface.

Unscrew the boiler cap.

To prevent overflow during filling, use the water funnel provided in the packaging. Fill with water until the red ball reaches the « max » level. Do not fill water tank past the base of the boiler cap thread. Do not overfill. Be sure that water does not spill over. If this occurs remove the excess water.

Replace the boiler cap and screw it on firmly but be careful to not over tighten.

Over tightening can damage the **green 0-ring**.

To fill boiler while you are using the appliance see section "Filling boiler while in use".

USE

3 • Turning on and off

Plug the pressure iron & steamer into a 120 volt electric outlet.

Press on/off switch (B), the iron light and steam indicator light will turn on.

When the steam indicator light turns off (approximately 11 minutes), steam is ready.

During ironing the temperature indicator light for the iron and the steam indicator light will turn on and off. This is normal as the temperature is being regulated. The unit is still on when these lights go out.




To turn the unit off, press the switch(es) in the opposite direction so that the side without the light is depressed. Unplug and leave to cool completely before emptying or putting away. Set the temperature control dial on the iron to the minimum setting before unplugging.

4 • Steam ironing

Never iron or steam clothes while they are being worn.

The appliance allows steam output to be adjusted (depending on model).

- setting on the iron : the steam control dial should be set to min.
- setting on the iron : the steam control should be set at the mid level.
- setting on the iron : the steam control dial can be set to the max.

TYPE OF FABRIC	IRON THERMO-STAT SETTING	STEAM CONTROL DIAL SETTING
LINEN, COTTON	•••	
WOOL, SILK	••	
SYNTHETIC (Viscose, Polyester)	•	

Note : It is normal for the connection cord to become warm during use.

Before using the pressure iron & steamer for the first time or if you have not used the steam function for a few minutes, press the steam button several times in a row while holding the iron away from your clothes. This will enable any cold water to be removed from the steam connection cord. When ironing start with fabrics that require a low temperature setting (•) and finish with those which need the highest temperature (•••).

Mixed fiber fabrics should be ironed on the temperature for the most delicate fabric. For example a shirt that is 60% cotton and 40% polyester should be ironed at the (•) setting for synthetics.

If spray starch is used, spray it onto the reverse side of the garment. Allow starch to penetrate before ironing.

For best results, use a mesh type ironing board to allow excess steam to escape.

For delicate fabrics, we recommend carrying out a test on an unobtrusive area of the garment such as an inner seam.

5 • Dry ironing

This appliance can be used for dry ironing if the steam trigger is not pressed and the steam control dial is set to min.

Set the iron's on/off switch to the on position.

6 • Vertical steam

To remove wrinkles in cotton or linen, the soleplate can come into contact with the fabric for optimal results.

For synthetic fabrics, a distance of 4 inches is recommended to avoid damage to the garment.

For delicate fabrics, we recommend carrying out a test on an unobtrusive part of the garment (inner seam).

Caution : Steam produced is very hot. To avoid burns and scalding never iron or steam clothes while they are being worn.

Fill iron according to the "Filling the boiler" section of instructions.

Press on/off switch (B), the iron light and steam indicator light will turn on.

When the steam indicator light turns off (approximately 11 minutes), steam is ready.

Hang the garment on a coat hanger and hold the fabric from the bottom of the garment slightly taut with one hand.

Holding the iron in a vertical position, press continuously on the steam button while moving the iron from the top of the garment to the bottom (C).

If unit is left on without steaming for a length of time, water can condense in the hose and droplets of water can be seen when you begin to use the pressure iron & steamer again. For best results simply aim the iron away from yourself, other people, animals and clothing and press the trigger for a few seconds to remove the condensation and steam begins to fill the hose.

7 • Filling the boiler while in use

Caution : Never unscrew the boiler cap while iron is producing steam and boiler is under pressure.

Before opening the boiler, ensure that there is no steam inside. To do this, press the steam button and keep it pressed until there is no more steam.

Turn the unit off (see section "Turning On and Off") and unplug from outlet.

Slowly unscrew the boiler cap. To prevent overflow during filling, use the water funnel provided in the packaging. Fill with water until the red ball reaches the « max » level. Do not fill water tank past the base of the boiler cap thread. Be sure that water does not spill over. If this occurs remove the excess water.

Replace the boiler cap and screw it on tightly but be careful not to over tighten.

Over tightening can damage the **green** O-ring Plug back in to electrical outlet.

8 • After ironing

Turn the unit off. (Consult section "Turning On and Off").

Unplug the appliance.

Place the iron on the iron rest and allow to cool completely which will take approximately **1 hour**.

Once cold, empty water from the appliance before storing. We recommend emptying the boiler when not in use.

MAINTENANCE AND CLEANING

Before cleaning ensure that the appliance is unplugged and completely cool down. The iron can be cleaned with a damp cloth and wiped dry. Never use household cleaners, descalers or solvents.

9 • Cleaning the soleplate

In normal use a draggy coating may build up on the soleplate (starch, detergent buildup, burnt synthetic fibers). This can be easily removed by using the Rowenta Soleplate Cleaning Kit or a quality hot iron soleplate cleaner available at most stores.

To prevent scratching the soleplate, do not iron over sharp objects (zippers, etc.). Do not place the iron on rough surfaces, e.g. metal iron support, which may scratch the soleplate.

Always put the iron with the soleplate down on the iron rest, never place on its heel.

10 • Rinsing out the boiler



Do not use descaling agents.

To ensure optimum steam performance, the boiler must be rinsed out after every 10 uses. If your tap water is hard increase the frequency. Check that the pressure iron & steamer is unplugged and cold.

Fill the boiler 3/4 full with tap water.

Shake the boiler for a few moments and then empty it over a sink (D).

Repeat the process.

Wipe the pressure iron & steamer base regularly with a damp cloth and wipe dry.

Never hold the pressure iron & steamer under the tap.

Boiler Cap

To ensure a proper seal, please check the green rubber ring in the safety cap for wear and tear regularly. If wear is noted, replace ring. Replacement rings are available through our main service centers.

TROUBLESHOOTING

Issues	Possible causes	Solutions
Water runs through the holes in the soleplate.	Boiler is too full.	Do not fill the boiler with more than 33 oz. water.
	Thermostat isn't working.	Send appliance to an authorized service center.
	The iron was used before reaching the required temperature.	Wait for the temperature/steam control lights to go out before ironing.
	Water has condensed in the steam tube as iron hasn't been used for some time.	Hold the iron away from clothing and press the steam control button until iron produces steam.
	Steam output control dial is set too high for the temperature set on the iron.	Decrease steam output while ironing at low temperature (+).
The soleplate leave white streaks on clothing when ironing.	The boiler has a build-up of scale and needs to be rinsed out regularly.	Rinse the boiler after every 10 uses (see "Cleaning and Maintenance").
The soleplate leave brown streaks on clothing when ironing.	Chemical descaling agents or additives have been used.	Never use descaling agents or additives. Rinse boiler thoroughly.
	Tap water is high in organic matter such as rust or iron.	Switch to bottled spring water or rinse boiler more often.
The soleplate has build-up.	Ironing at too high a temperature.	Refer to the Steam Ironing section of the instructions for temperature recommendations.
	Spray starch build-up.	Spray starch on the reverse side of the garment.
There is little or no steam.	The boiler is empty.	Fill the boiler.
	The boiler is not ready.	Wait for the steam indicator light to go out before using steam.
Steam escapes from the boiler cap.	Cap screwed on incorrectly.	Unscrew cap when unit is cold and put back on.
	The seal on the cap is worn.	Check cap regularly for signs of wear and tear to green rubber ring. Replace if wear is noticed.
Water spitting out of the boiler cap.	The boiler cap is not tight enough.	Check that O-ring is not cracked or broken and that you have tightened the boiler cap firmly.

If troubleshooting does not assist, before consulting the retailer regarding their return/exchange policy, please telephone consumer service at 781-396-0600.

In the interest of improving products, Rowenta reserves the right to change specifications without prior notice.

LIMITED WARRANTY

This Rowenta product is warranted for 1 year from date of purchase against defects in material and workmanship. During this period, any Rowenta product that, upon inspection by Rowenta, is proved defective, will be repaired or replaced, at Rowenta's option, without charge to the customer. If a replacement product is sent, it will carry the remaining warranty of the original product. This warranty does not apply to any defect arising from a buyer's or user's misuse of the product, negligence, failure to follow Rowenta's instructions, use on current or voltage other than that stamped on the product, or alteration or repair not authorized by Rowenta. Repair or disassembly by anyone other than a Rowenta authorized service center will void the warranty.

THE WARRANTIES SET FORTH HEREIN ARE EXCLUSIVE AND NO OTHER WARRANTIES, EXPRESS OR IMPLIED, INCLUDING BUT NOT LIMITED TO ANY WARRANTY OF MERCHANTABILITY OR FITNESS FOR A PARTICULAR PURPOSE OR USE, ARE MADE BY ROWENTA OR ARE AUTHORIZED TO BE MADE WITH RESPECT TO THE PRODUCT.

Some states do not allow limitations on how long an implied warranty lasts or do not allow the exclusion of incidental or consequential damages, so the above limitations may not apply to you. This warranty gives you specific legal rights, and you may also have other rights, which vary from state to state.

If you believe your product is defective, bring the product (or send it, postage prepaid) along with proof of purchase to the nearest authorized Rowenta Service Center (see below). If you send the product, please include a letter explaining the nature of the claimed defect.

CORRESPONDENCE CAN BE SENT TO :

ROWENTA

196 Boston Avenue

Medford, MA 02155, U.S.A.

Tel: (781) 396-0600

www.rowentausa.com

OFFICE LOCATION ONLY Letters will be accepted at this address and packages without a return authorization number will be refused or forwarded to a service center.

If your appliance needs service, ship the product to your nearest regional service center. Be sure to put your name on the outside of the shipping box (no P.O. boxes please). Include a brief note describing the issue, and include a copy of the sales receipt if the product is in warranty. If in warranty, Rowenta will repair or replace the product at their discretion. If the product is out of warranty, you will be advised of the cost of repair before any work begins.

Turnpike Appliance
3495A Lawson Blvd.
Oceanside, NY 11572
516-483-5596

Authorized Appliance
1644 West Ogden Ave.
Downers Grove, IL 60515
630-852-1550

California Electric
1170G Burnett Ave.
Concord, CA 94520
925-827-1011

SERVICE CENTER INFORMATION IS SUBJECT TO CHANGE.

Please visit our website at www.rowentausa.com or call 781-396-0600 for automated service center information.